



WOODCREST
CAPITAL, LLC

12.1 Acres Edgewood NM

10 Liberty Square Circle | Edgewood NM



Traffic Counts	
I-40	20,055 VPD
US Route 66	6,577 VPD
NM-344	11,419 VPD

Demographics	1-mile	3-mile	5-mile
Population	1,079	7,595	12,185
Households	437	3,018	4,792
Average HH Income	\$78,619	\$76,991	\$83,265

*Demographics provided by CoStar Group, www.costar.com, 2021 dataset

**LAND FOR
SALE**

(817) 927-0050

**ACRES:
+/- 12.1**

WILL SUBDIVIDE

**ZONING:
"C-2"**

Commercial

Woodcrest Capital, LLC
3113 South University Drive, Suite 600
Fort Worth, TX 76109
www.woodcrestcapital.com

The information contained herein has been given to us by the owner of the property or other sources we deem reliable. We have no reason to doubt its accuracy, but we do not guarantee it. All information should be verified prior to purchase or lease.

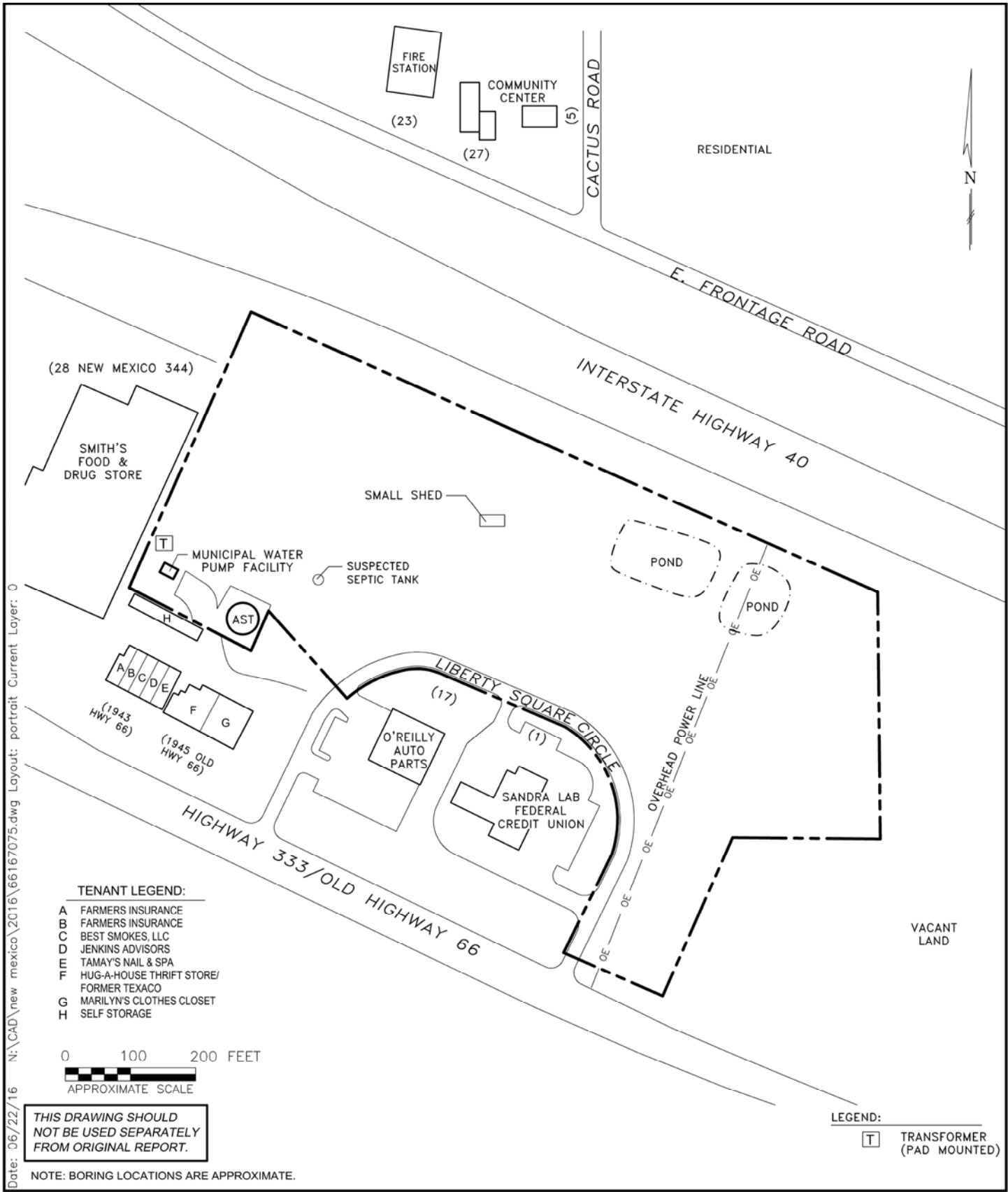
(817) 927-0050 | woodcrestcapital.com

12.1 Acres Edgewood NM

10 Liberty Square Circle | Edgewood NM

Woodcrest Capital, LLC
3113 South University Drive, Suite 600
Fort Worth, TX 76109

12.1 ACRES EDGEWOOD NM | Edgewood, New Mexico



Project Mng:	MRH	Project No:	66167075	Terracon Consulting Engineers and Scientists 4905 Hawkins NE Albuquerque, New Mexico 87109 PH. (505) 797-4287 FAX. (505) 797-4288	SITE DIAGRAM 12-ACRE TRACT 10 LIBERTY SQUARE CIRCLE EDGEWOOD, SANTA FE COUNTY, NEW MEXICO	EXHIBIT 2
Drawn By:	CDD	Scale:	AS SHOWN			
Checked By:	MRH	Date:	06/22/16			
Approved By:	MRH					